

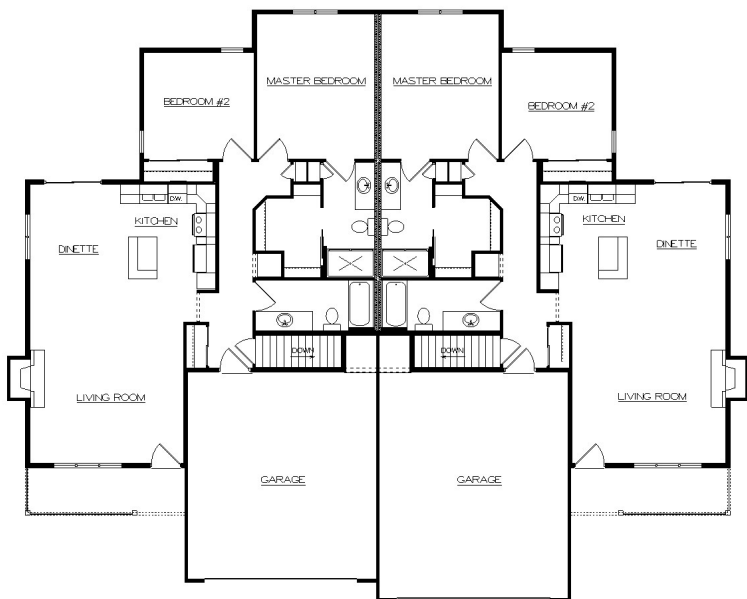
The Barrington



STANDARD DESIGN FEATURES

2 x 6 House Exterior w/ Tyvek Wrap
 R-25 Exterior Warm Wall System
 R-49 Blown Insul. in House Ceiling
 Pella Vinyl Windows
 Pella Vinyl Sliding Patio Doors
 Raised Panel Front Doors
 Raised Panel O.H. Garage Doors
 Double Four Vinyl Siding
 Aluminum Fascia & Soffit
 Dimensional Roof Shingles
 Concrete Driveway Allowance
 Concrete Service Walk Allowance
 Kohler/Sterling Plumbing Fixtures/Faucets
 Molded Panel Doors and Painted Trim
 Schlage Locksets
 Norcraft Cabinets
 Laminate Tri-Cove Countertops
 Vanity Size Bathroom Mirrors
 Quiet Wash Dishwashers
 Microhood w/ Venting in Each Unit
 Garbage Disposals w/ Connections
 Ice Maker Line to Refrigerators
 First Floor Laundry Hookups
 Vanity Size Bathroom Mirrors
 Bath Fans w/ Timers
 Drywall - 3 Textures to Choose
 Interior & Exterior Painting
 Power Vent Water Heaters
 High Efficiency Natural Gas Furnaces
 Central Air Conditioning units
 100 Amp Electric Services
 Floor Covering Allowance
 Light Fixture Allowance
 Plumbing Lateral Allowance
 Sand Backfill Allowance
 Hauling Fill Allowance
 Temporary Gravel Drive Allowance
 Silt Fence Allowance
 Focus on Energy Home

**Std. Features & Price Subject to Change*



1315 Sq. Ft. Each Unit

Living Room	16'x 18'
Kitchen	10'x 11'
Dinette	10'x 11'
MasterBdrm	12'x 15'
Bedroom #2	12'x 11'
Garage	20'x 22'

Room sizes are approx.

*Plan can be modified
To meet your needs*



Sheboygan County's Largest Home Builder