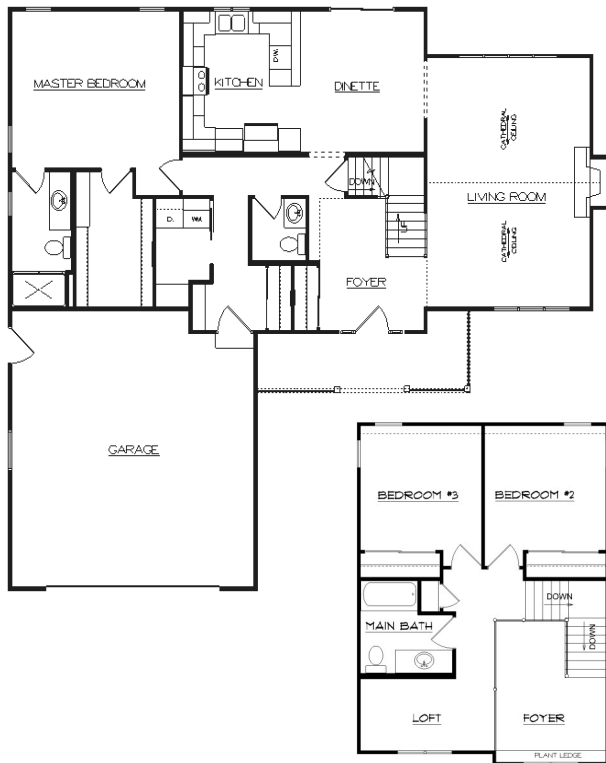


# The Briarwood



## STANDARD DESIGN FEATURES

*Double Four Vinyl Siding  
 Aluminum Fascia & Soffits  
 Anderson Vinyl Clad Windows  
 Cedar Around Front Windows / OH Door  
 6 Panel Steel Front Door w/ Two Sidelites  
 Raised Panel Insulated O.H. Garage Door  
 O.H. Garage Door Opener w/ Two Remotes  
 6' Sliding Wood Patio Door  
 Three Tab Roof Shingles  
 450 SF Concrete Drive (18 x 25)  
 30' x 4' Concrete Service Walk  
 2 x 6 Construction with Tyvek  
 R-24 Warm Wall with R-49 Blown Ceiling  
 Brick Gas Fireplace with Oak Mantle  
 Cathedral Ceiling in Living Room  
 Open Staircase to Second Floor  
 Oak Colonial Staircase Spindles & Railing  
 Kentwood Oak Cabinets Throughout  
 Wall Cabinets & Counter in Laundry  
 Crown Molding Above Wall Cabinets  
 Kenmore Quiet Wash Dishwasher  
 Garbage Disposal with Connection  
 Ice Maker Line to Refrigerator  
 Kenmore Micro-Hood with Venting  
 Complete Painting of Interior  
 Staining of Oak Interior Woodwork  
 Kohler Plumbing Fixtures & Faucets  
 Kohler Shower Door in Master Bath  
 40 Gallon Nat. Gas Water Heater  
 200 Amp Electric Service  
 Recessed Lights in Kitchen, Fireplace  
 High Efficiency Natural Gas Furnace  
 Central Air Conditioning  
 \$7200 Floor Covering Allowance  
 \$1000 Light Fixture Allowance  
 \$2200 Plumbing Lateral Allowance  
 \$1400 Sand Backfill Allowance  
 \$1400 Hauling Excess Fill Allowance  
 \$700 Gravel Base for Drive Allowance  
 \$175 Silt Fence Allowance*



**1879 Square Feet**

<i>Living Room</i>	<i>15'x 21'</i>	<i>Master Bdrm</i>	<i>15'x 13'</i>
<i>Kitchen</i>	<i>11'x 12'</i>	<i>Bedroom #2</i>	<i>11'x 11'</i>
<i>Dinette</i>	<i>11'x 12'</i>	<i>Bedroom #3</i>	<i>11'x 11'</i>
<i>Loft</i>	<i>12'x 6'</i>	<i>Garage</i>	<i>23'x 24'</i>

\*Std. Features & Price Subject to Change

# Werner Homes

4539 South Taylor Drive, Sheboygan 458-4104 [wernerhomes@wernerhomes.com](mailto:wernerhomes@wernerhomes.com)