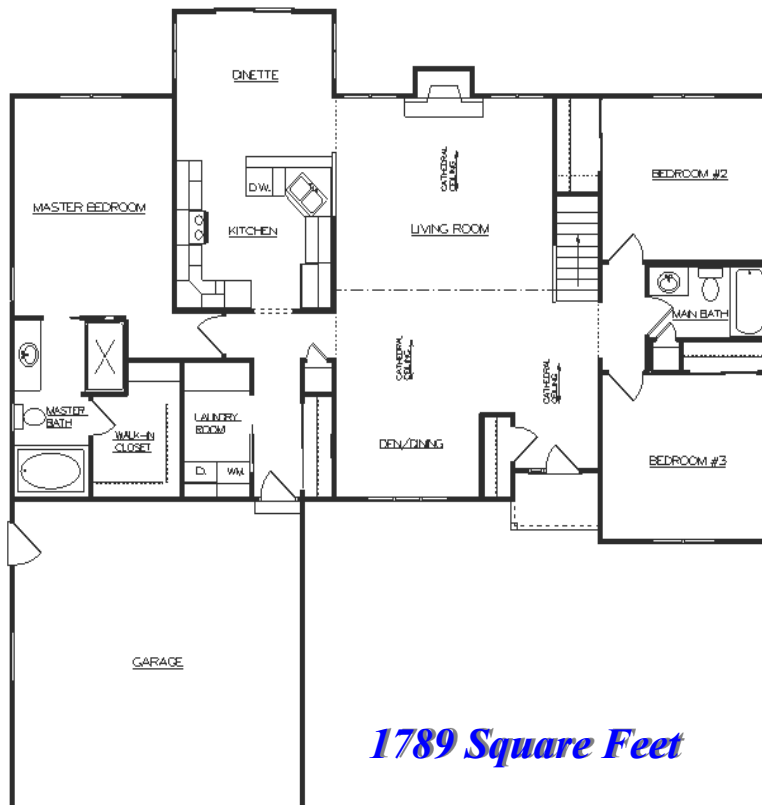




Manchester



1789 Square Feet

Room Dimensions

<i>Living Room</i>	<i>17'x 18'</i>
<i>Kitchen</i>	<i>12'x 11'</i>
<i>Dinette</i>	<i>12'x 10'</i>
<i>Den/Dining</i>	<i>11' x 10'</i>
<i>Master Bdrm</i>	<i>12'x 16'</i>
<i>Bedroom #2</i>	<i>12'x 11'</i>
<i>Bedroom #3</i>	<i>13'x 10'</i>
<i>Garage</i>	<i>22'x 22'</i>

Room sizes are approx.

*Plan Can Be Modified
To Meet Your Needs*

Standard Design Features

2 x 6 House Exterior w/ Tyvek Wrap
 R-25 Exterior Warm Wall System
 R-49 Blown Insul. In House Ceiling
 Pella Vinyl Windows
 Pella Vinyl Sliding Patio Door
 Raised Panel Front Door
 Raised Panel O.H. Garage Door
 Overhead Garage Door Opener
 Double Four Vinyl Siding
 Aluminum Fascia & Soffit
 Dimensional Roof Shingles
 Concrete Driveway Allowance
 Concrete Service Walk Allowance

Kohler/Sterling Plumbing Fixtures/Faucets
 Molded Panel Doors and Painted Trim
 Schlage Locksets
 Norcraft Cabinets
 Laminate Tri-Cove Countertops
 Kitchen Island w/Seating Area
 Quiet Wash Dishwasher
 Micro-Hood with Venting
 Washer & Dryer Main Floor Hookups
 Ice Maker Water Line to Refrigerator
 Garbage Disposal
 Vanity Size Bathroom Mirrors
 Bath Fans w/Timers

Drywall - 3 Textures to Choose
 Interior & Exterior Painting
 High Eff. Nat. Gas Furnace w/AC
 Power Vent Water Heater
 200 Amp Electrical Service
 Floor Covering Allowance
 Light Fixture Allowance
 Sand Backfill Allowance
 Hauling Fill Allowance
 Plumbing Lateral Allowance
 Gravel/Temp. Drive Allowance
 Silt Fence Allowance
 Focus on Energy Home



Sheboygan County's Largest Home Builder

