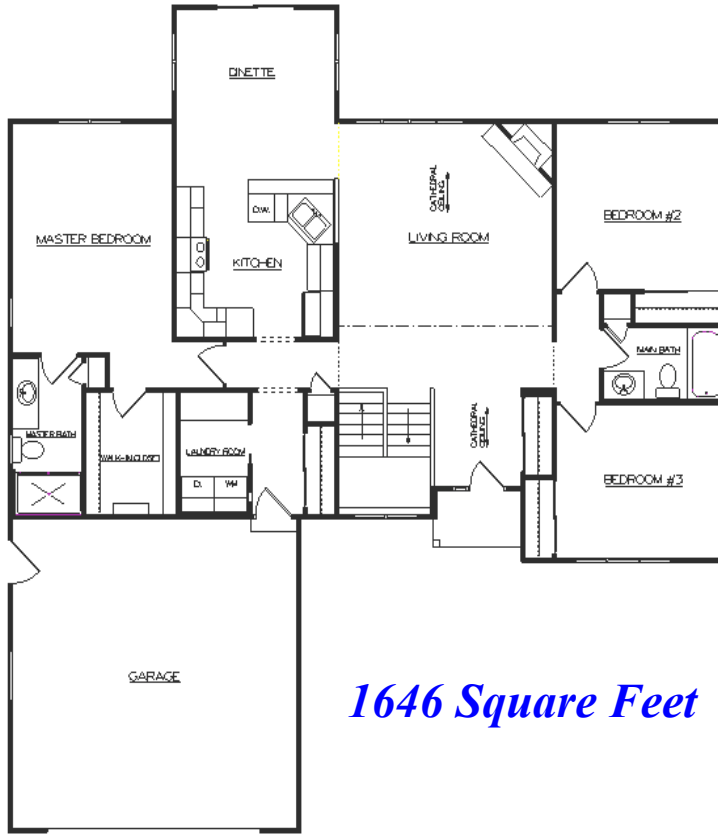




Rochester



1646 Square Feet

Room Dimensions

<i>Living Room</i>	<i>16'x 18'</i>
<i>Kitchen</i>	<i>12'x 11'</i>
<i>Dinette</i>	<i>12'x 12'</i>
<i>Master Bdrm</i>	<i>12'x 16'</i>
<i>Bedroom #2</i>	<i>12'x 12'</i>
<i>Bedroom #3</i>	<i>12'x 11'</i>
<i>Garage</i>	<i>22'x 22'</i>

Room are approx.

*Plan Can Be Modified
To Meet Your Needs*

Standard Design Features

2 x 6 House Exterior w/ Tyvek Wrap
R-25 Exterior Warm Wall System
R-49 Blown Insul. In House Ceiling
Pella Vinyl Windows
Pella Vinyl Sliding Patio Door
Raised Panel Front Door
Raised Panel O.H. Garage Door
Overhead Garage Door Opener
Double Four Vinyl Siding
Aluminum Fascia & Soffit
Dimensional Roof Shingles
Concrete Driveway Allowance
Concrete Service Walk Allowance

Kohler/Sterling Plumbing Fixtures/Faucets
Molded Panel Doors and Painted Trim
Schlage Locksets
Norcraft Cabinets
Laminate Tri-Cove Countertops
Kitchen Island w/Seating Area
Quiet Wash Dishwasher
Micro-Hood with Venting
Washer & Dryer Main Floor Hookups
Ice Maker Water Line to Refrigerator
Garbage Disposal
Vanity Size Bathroom Mirrors
Bath Fans w/Timers

Drywall - 3 Textures to Choose
Interior & Exterior Painting
High Eff. Nat. Gas Furnace w/AC
Power Vent Water Heater
200 Amp Electrical Service
Floor Covering Allowance
Light Fixture Allowance
Sand Backfill Allowance
Hauling Fill Allowance
Plumbing Lateral Allowance
Gravel/Temp. Drive Allowance
Silt Fence Allowance
Focus on Energy Home



Sheboygan County's Largest Home Builder