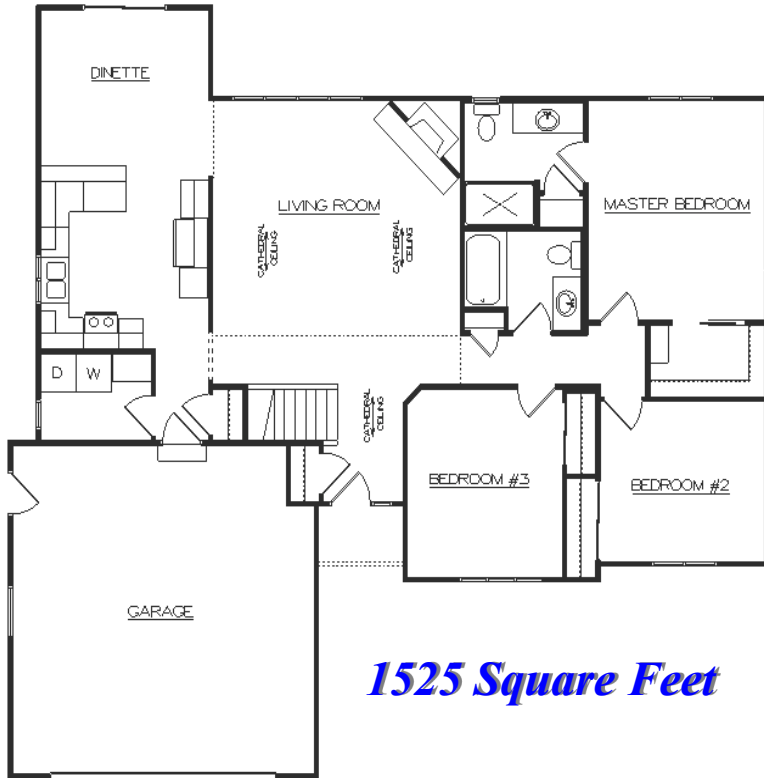




# *Windsor*



**1525 Square Feet**

### **Room Dimensions**

<i>Living Room</i>	<i>18'x 19'</i>
<i>Kitchen</i>	<i>12'x 12'</i>
<i>Dinette</i>	<i>12'x 10'</i>
<i>Master Bdrm</i>	<i>13'x 14'</i>
<i>Bedroom #2</i>	<i>12'x 11'</i>
<i>Bedroom #3</i>	<i>11'x 12'</i>
<i>Garage</i>	<i>22'x 22'</i>

*Room sizes are approx.*

**Plan Can Be Modified  
To Meet Your Needs**

### **Standard Design Features**

2 x 6 House Exterior w/ Tyvek Wrap  
 R-25 Exterior Warm Wall System  
 R-49 Blown Insul. In House Ceiling  
 Pella Vinyl Windows  
 Pella Vinyl Sliding Patio Door  
 Raised Panel Front Door  
 Raised Panel O.H. Garage Door  
 Overhead Garage Door Opener  
 Double Four Vinyl Siding  
 Aluminum Fascia & Soffit  
 Dimensional Roof Shingles  
 Concrete Driveway Allowance  
 Concrete Service Walk Allowance

Kohler/Sterling Plumbing Fixtures/Faucets  
 Molded Panel Doors and Painted Trim  
 Schlage Locksets  
 Norcraft Cabinets  
 Laminate Tri-Cove Countertops  
 Kitchen Island w/Seating Area  
 Quiet Wash Dishwasher  
 Micro-Hood with Venting  
 Washer & Dryer Main Floor Hookups  
 Ice Maker Water Line to Refrigerator  
 Garbage Disposal  
 Vanity Size Bathroom Mirrors  
 Bath Fans w/Timers

Drywall - 3 Textures to Choose  
 Interior & Exterior Painting  
 High Eff. Nat. Gas Furnace w/AC  
 Power Vent Water Heater  
 100 Amp Electrical Service  
 Floor Covering Allowance  
 Light Fixture Allowance  
 Sand Backfill Allowance  
 Hauling Fill Allowance  
 Plumbing Lateral Allowance  
 Gravel/Temp. Drive Allowance  
 Silt Fence Allowance  
 Focus on Energy Home



Sheboygan County's Largest Home Builder