



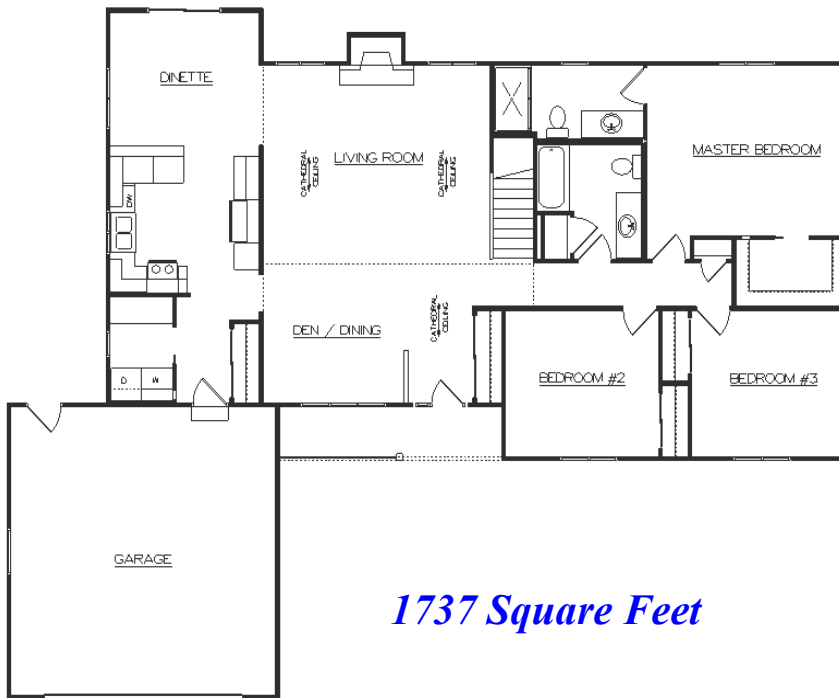
# *Hartford*

## *Room Dimensions*

<i>Living Room</i>	<i>19'x 14'</i>
<i>Kitchen</i>	<i>12'x 11'</i>
<i>Dinette</i>	<i>12'x 10'</i>
<i>Den/Dining</i>	<i>12' x 11'</i>
<i>Master Bdrm</i>	<i>16'x 13'</i>
<i>Bedroom #2</i>	<i>12'x 11'</i>
<i>Bedroom #3</i>	<i>12'x 11'</i>
<i>Garage</i>	<i>22'x 22'</i>

*Room sizes are approx.*

*Plan Can Be Modified  
To Meet Your Needs*



*1737 Square Feet*

## *Standard Design Features*

*2 x 6 House Exterior w/ Tyvek Wrap  
R-25 Exterior Warm Wall System  
R-49 Blown Insul. In House Ceiling  
Pella Vinyl Windows  
Pella Vinyl Sliding Patio Door  
Raised Panel Front Door  
Raised Panel O.H. Garage Door  
Overhead Garage Door Opener  
Double Four Vinyl Siding  
Aluminum Fascia & Soffit  
Dimensional Roof Shingles  
Concrete Driveway Allowance  
Concrete Service Walk Allowance*

*Kohler/Sterling Plumbing Fixtures/Faucets  
Molded Panel Doors and Painted Trim  
Schlage Locksets  
Norcraft Cabinets  
Laminate Tri-Cove Countertops  
Kitchen Island w/Seating Area  
Quiet Wash Dishwasher  
Micro-Hood with Venting  
Washer & Dryer Main Floor Hookups  
Ice Maker Water Line to Refrigerator  
Garbage Disposal  
Vanity Size Bathroom Mirrors  
Bath Fans w/Timers*

*Drywall - 3 Textures to Choose  
Interior & Exterior Painting  
High Eff. Nat. Gas Furnace w/AC  
Power Vent Water Heater  
200 Amp Electrical Service  
Floor Covering Allowance  
Light Fixture Allowance  
Sand Backfill Allowance  
Hauling Fill Allowance  
Plumbing Lateral Allowance  
Gravel/Temp. Drive Allowance  
Silt Fence Allowance  
Focus on Energy Home*



Sheboygan County's Largest Home Builder

