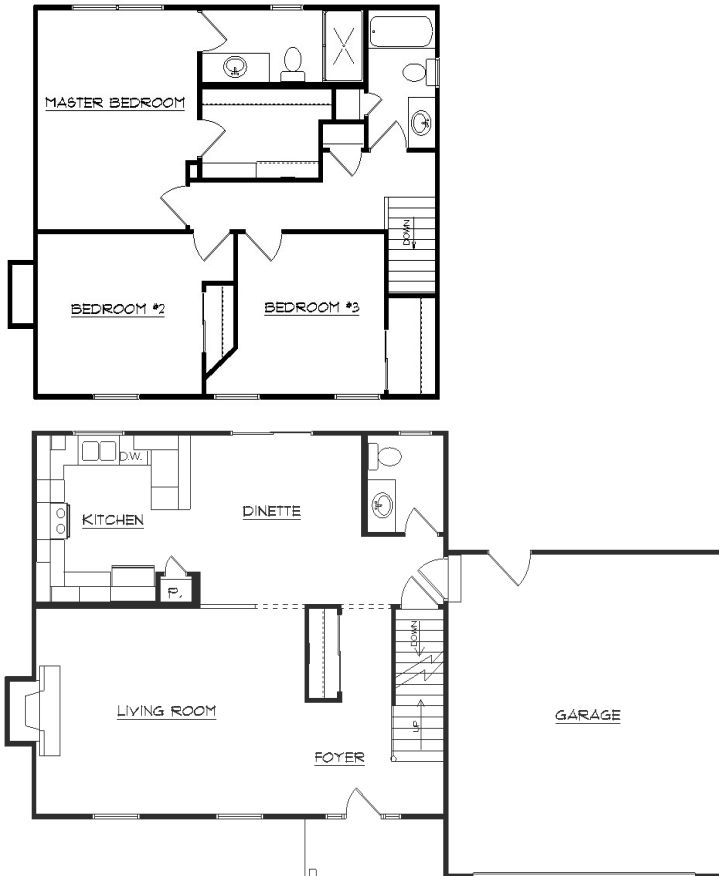


The Lexington



STANDARD DESIGN FEATURES



- 2 x 6 House Exterior w/ Tyvek Wrap*
- R-25 Exterior Warm Wall System*
- R-49 Blown Insul. in House Ceiling*
- Pella Vinyl Windows*
- Pella Vinyl Sliding Patio Door*
- Raised Panel Front Door*
- Raised Panel O.H. Garage Door*
- Double Four Vinyl Siding*
- Aluminum Fascia & Soffit*
- Dimensional Roof Shingles*
- Concrete Driveway Allowance*
- Concrete Service Walk Allowance*
- Kohler/Sterling Plumbing Fixtures/Faucets*
- Molded Panel Doors and Painted Trim*
- Schlage Locksets*
- Norcraft Cabinets*
- Laminate Tri-Cove Countertops*
- Vanity Size Bathroom Mirrors*
- Quiet Wash Dishwasher*
- Microhood w/ Venting*
- Garbage Disposal w/ Connection*
- Ice Maker Line to Refrigerator*
- First Floor Laundry Hookup*
- Vanity Size Bathroom Mirrors*
- Bath Fans w/ Timers*
- Drywall - 3 Textures to Choose*
- Interior & Exterior Painting*
- Power Vent Water Heaters*
- High Efficiency Natural Gas Furnace*
- Central Air Conditioning*
- 200 Amp Electric Service*
- Floor Covering Allowance*
- Light Fixture Allowance*
- Plumbing Lateral Allowance*
- Sand Backfill Allowance*
- Hauling Fill Allowance*
- Temporary Gravel Drive Allowance*
- Silt Fence Allowance*

1590 Square Feet

<i>Living Room</i>	<i>25'x 14'</i>	<i>Master Bdrm</i>	<i>12'x 15'</i>
<i>Kitchen</i>	<i>11'x 11'</i>	<i>Bedroom #2</i>	<i>12'x 11'</i>
<i>Dinette</i>	<i>13'x 11'</i>	<i>Bedroom #3</i>	<i>11'x 11'</i>
<i>Garage</i>	<i>20'x 22'</i>		

Room sizes are approx.



Sheboygan County's Largest Home Builder