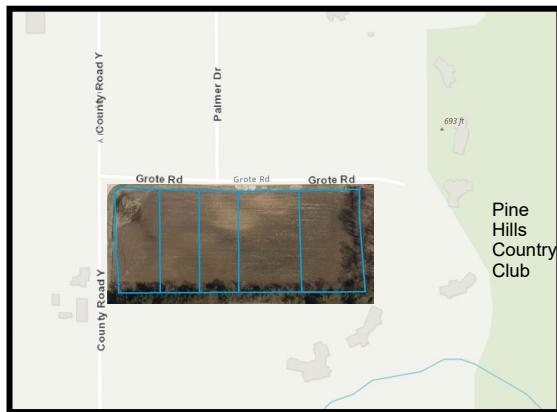
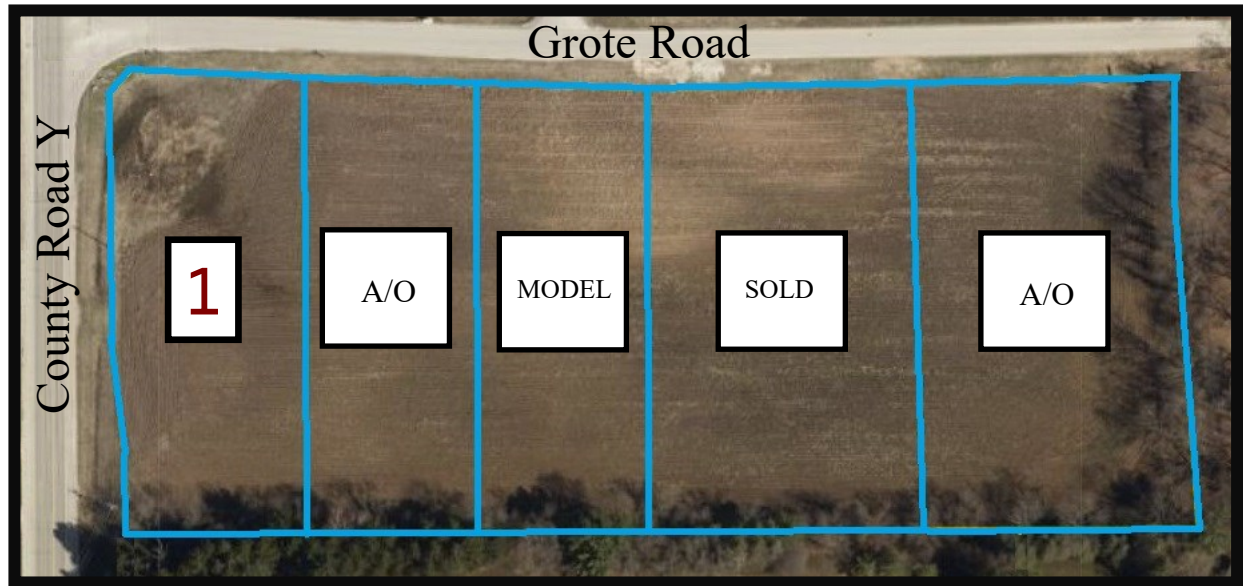




KOPPELMANN
ESTATES
SUBDIVISION

Town of Sheboygan



Premium Town of Sheboygan Lots located close to Village of Kohler and Pines Hills Country Club.

Large lots offer wooded perimeter and partial lookout to full walkout basement exposure.

Lots are fully improved with paved roadway, sewer and water laterals, and gas and electric.

- Lots can be reserved with a \$2,000 deposit with 75 days to sign building contract with Werner Homes
- Protective Covenants and Restrictions apply to all lots
- Lot dimensions are approximate
- All sales subject to Accepted Offers and prices are subject to change
- AO—Accepted Offer

Lot	Acres	Width	Exposure	Price
1	1.2	142'	5'	\$ 82,900
2	1.1	135'	8-9'	A/O
3	1.1	135'	9'	MODEL
4	1.7	216'	9'	SOLD
5	1.7	216'	8'	A/O



For Further Details
(920) 458-4104
wernerhomes.com
Office Located at 4539 S. Taylor Dr. Sheboygan, WI