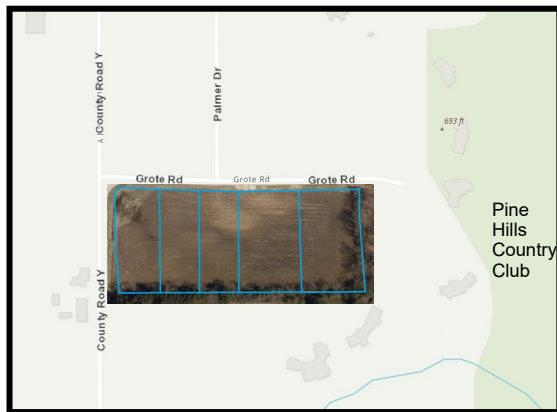




**KOPPELMANN  
ESTATES**  
SUBDIVISION

**Town of Sheboygan**



**Premium Town of Sheboygan Lots located close to Village of Kohler and Pines Hills Country Club.**

**Large lots offer wooded perimeter and partial lookout to full walkout basement exposure.**

**Lots are fully improved with paved roadway, sewer and water laterals, and gas and electric.**

- Lots can be reserved with a \$2,000 deposit with 75 days to sign building contract with Werner Homes
- Protective Covenants and Restrictions apply to all lots
- Lot dimensions are approximate
- All sales subject to Accepted Offers and prices are subject to change
- AO—Accepted Offer

Lot	Acres	Width	Exposure	Price
1	1.2	142'	5'	\$ 82,900
2	1.1	135'	8-9'	SOLD
3	1.1	135'	9'	SOLD
4	1.7	216'	9'	SOLD
5	1.7	216'	8'	A/O



**For Further Details  
(920) 458-4104  
wernerhomes.com  
Office Located at 4539 S. Taylor Dr. Sheboygan, WI**