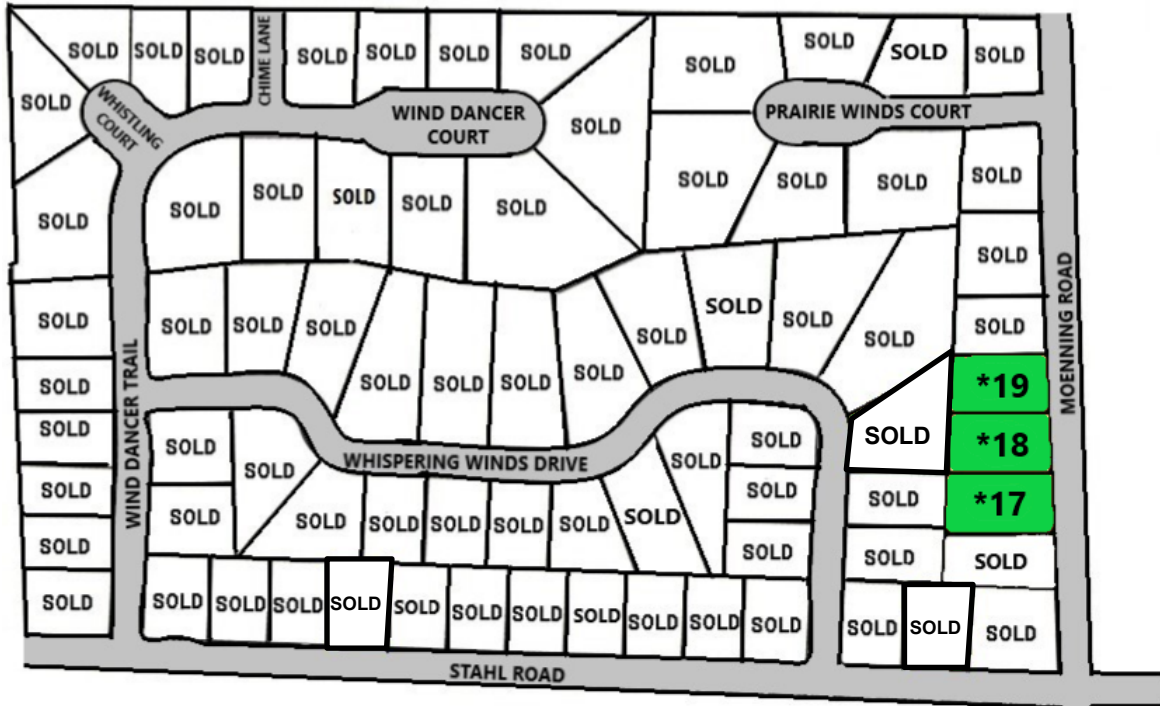


# RAMMER POND ESTATES

Exclusive Rural Living

- Spacious 1/2 to 3/4 Acre Lot Sizes
- Natural Pond and Two Man Made Ponds
- Wooded Backdrops
- Custom Street Lighting for Safety
- Wide Variety of Lot Sizes and Prices to Fit Your Needs
- Conservancy Areas Provide Added Green Space
- Blacktop Roads and all Buried Utilities

Town of Wilson



- Lots are fully improved with:
  - Paved roadway
  - Sewer lateral to lot line
  - Gas and Electric to lot line
- Buyer to provide:
  - Well
  - Sewer Connection Fee \$ 3,000
- Minimum Requirements:
  - 6/12 Roof Pitch
  - Partial Brick or Stone Exterior
  - Minimum 40' Setback Provides for Ideal Front Yard Setting
- Minimum Square Footage:
  - Lots 14, 17, 18, & 19
    - 1,600 Sq. Ft. Ranch
- Subdivision covenants and restrictions apply
- All sales subject to availability
- Prices subject to change

LOTS	ACRES	PRICE
17*	.59	\$36,900
18*	.56	\$36,900
19*	.54	\$36,900

\*Lots Marked with an Asterisk are available as part of a Building Package with Werner Homes. Contact Werner Homes for Details



**COLDWELL BANKER**  
WERNER & ASSOCIATES

4539 South Taylor Drive, Sheboygan, WI  
WWW.COLDWELLBANKER.COM  
(920) 458-4103