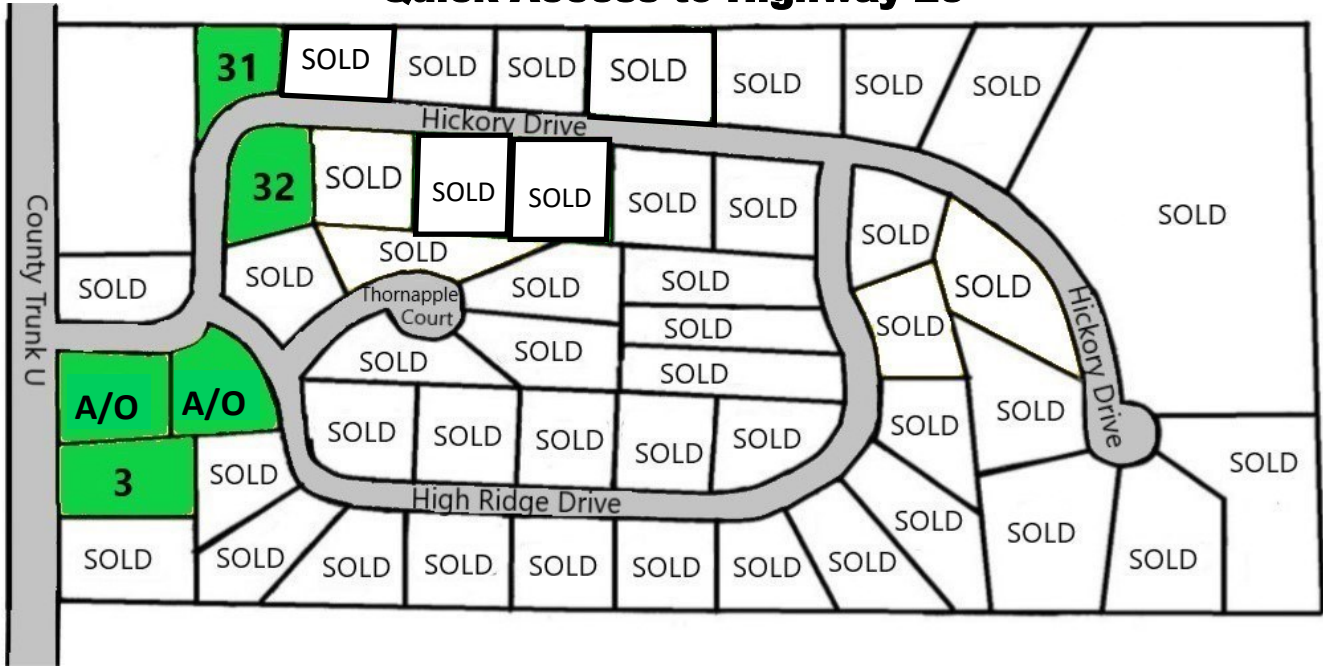


Spring Hills Subdivision

Town of Greenbush

**Located in the Beautiful Northern Kettle Moraine
Quick Access to Highway 23**



***Lots Include:**

- *Blacktop Road
- *Electric to Lot Line

***Well, Propane, Septic & Gas Required By Buyer**

***Lots Available with Walk-out or Look-out Basement Exposure**

***Subdivision Covenants & Restrictions are on File**

***1,000 Square Foot Minimum Required on a Ranch Home**

***1,800 Square Foot Minimum Required on a 2 Story Home**

***All Sales Subject to Availability**

***All Prices Subject to Change**

***All Builders Welcome**

Lot	Acres	Price	MLS
2	.89	A/O	1861600
3	1.06	\$ 35,000	1861601
5	.82	A/O	1861602
31	.98	\$35,000	1861603
32	.99	\$30,000	1861604

A/O - Accepted Offer



COLDWELL BANKER
WERNER & ASSOCIATES

4539 South Taylor Drive, Sheboygan, WI
WWW.COLDWELLBANKER.COM
(920) 458-4103